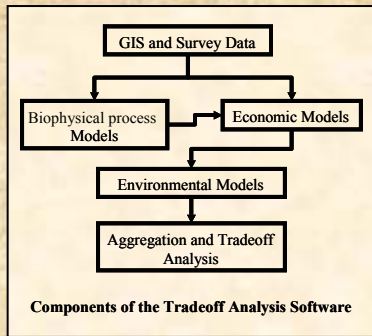
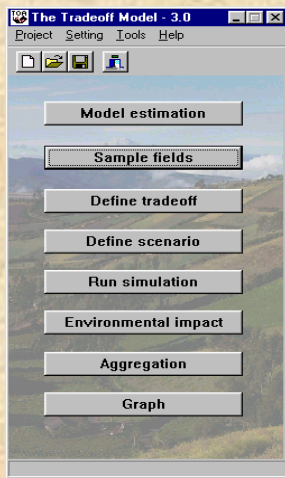


Tradeoff Analysis: A Policy Decision Support System

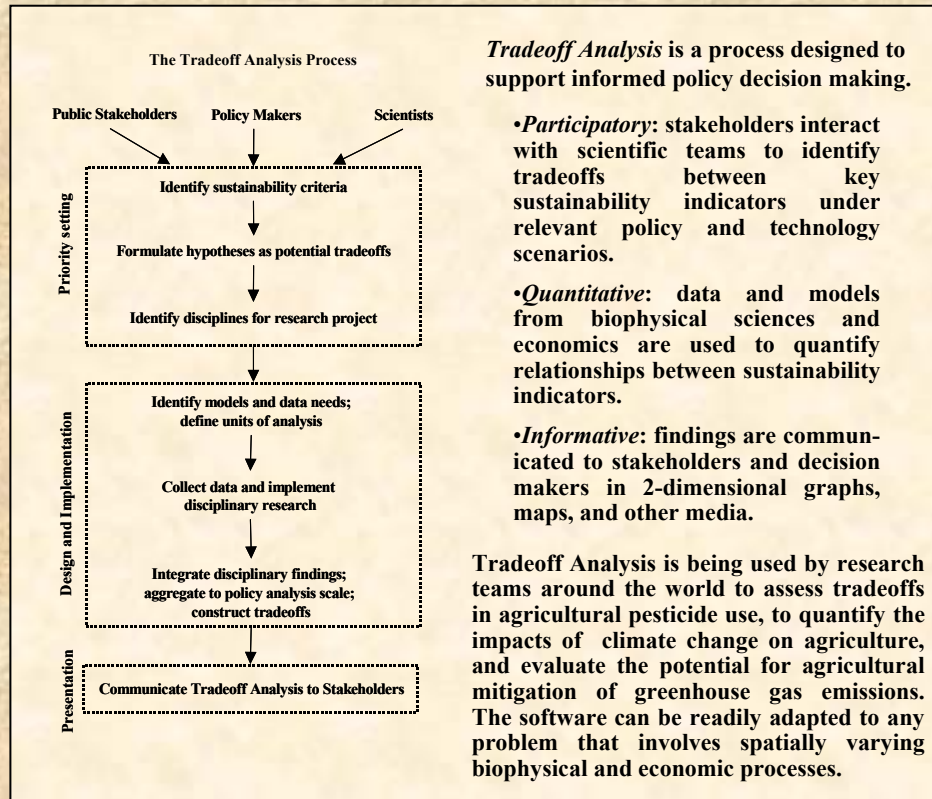
The TOA Software: A Quantitative Tool to implement TOA Analysis



The Tradeoff Analysis software is a GIS-based system designed to integrate disciplinary data and models to implement the Tradeoff Analysis approach.



In agricultural applications, the TOA software links crop production models (DSSAT, Century) to econometric-process simulation models and environmental models.



Tradeoff Analysis is a process designed to support informed policy decision making.

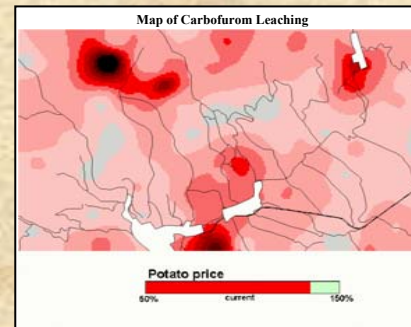
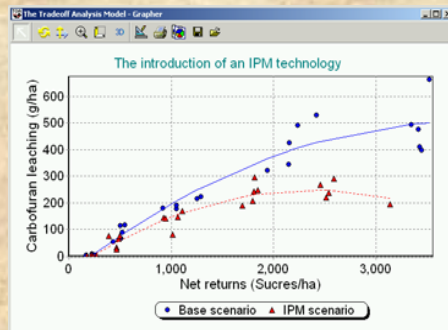
•**Participatory:** stakeholders interact with scientific teams to identify tradeoffs between key sustainability indicators under relevant policy and technology scenarios.

•**Quantitative:** data and models from biophysical sciences and economics are used to quantify relationships between sustainability indicators.

•**Informative:** findings are communicated to stakeholders and decision makers in 2-dimensional graphs, maps, and other media.

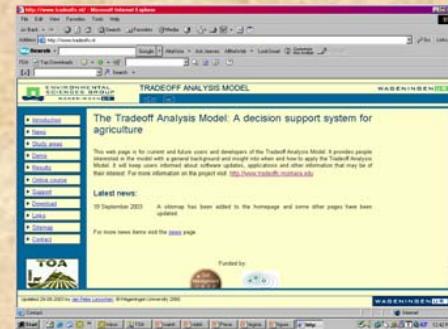
Tradeoff Analysis is being used by research teams around the world to assess tradeoffs in agricultural pesticide use, to quantify the impacts of climate change on agriculture, and evaluate the potential for agricultural mitigation of greenhouse gas emissions. The software can be readily adapted to any problem that involves spatially varying biophysical and economic processes.

The TOA software can be used to generate results in graphical form (Tradeoff Curves) and in maps, or output can be exported to other software such as Excel.

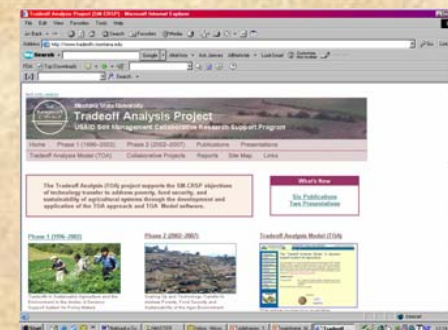


For more information:

<http://www.tradeoffs.nl>



<http://www.tradeoffs.montana.edu>



This research is supported by the USAID Soil Management Collaborative Research Support Program and The Ecoregional Fund to support methodological initiatives.

